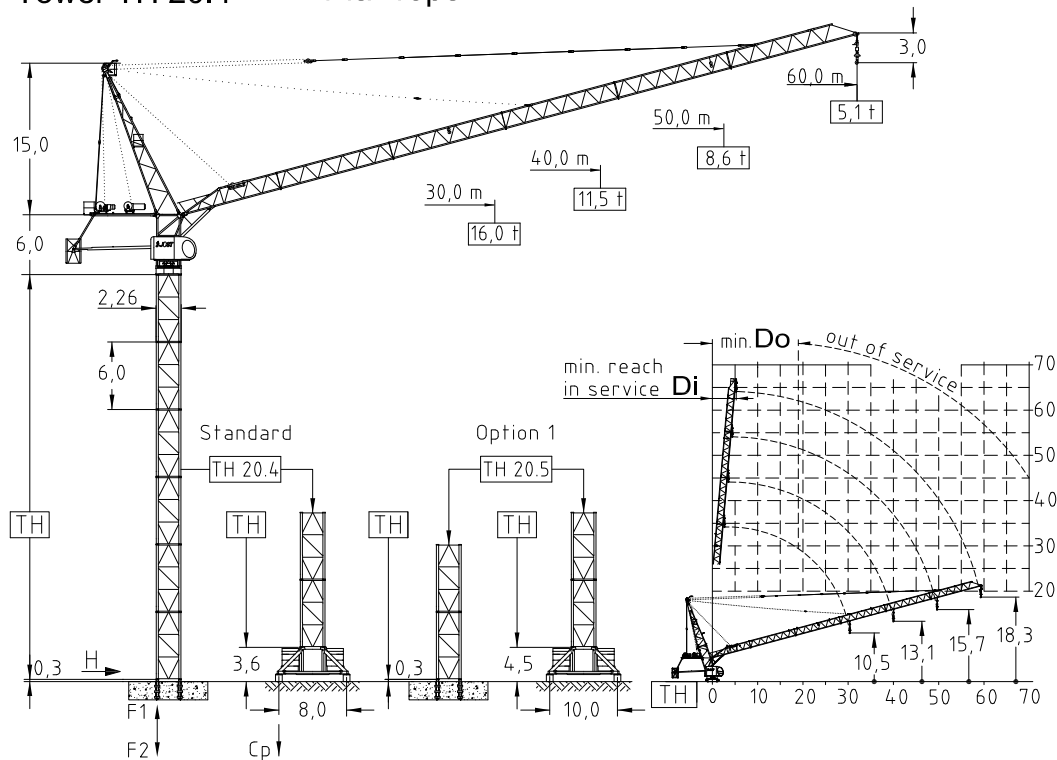


JL 416.24 - 24,0 ton Luffing crane

Tower TH 20.4 4-fall rope



Jib (m)	Jib reach (m)		Tower heights all data in (m)			
			Standard Tower		Option 1	
			Foundat.	Chassis	Foundat.	Chassis
	Di	Do	TH 20.4	UC 8,0-20.4	TH 20.5	UC 10,0-20.5
30,0	3,0	20,0	54,0	48,0	75,0	63,0
40,0	4,0	20,0	48,0	42,0	69,0	60,0
50,0	5,0	20,0	42,0	36,0	63,0	54,0
60,0	6,0	20,0	42,0	30,0	63,0	48,0

EN 14439 : 2008
WIND C 25
ISO 9001 : 2008



Jib		max. Load		Jib reach											
m	rope	t	m	22	25	27	30	35	40	45	50	55	60		
60,0	☺	12,0	27,1	12,00	12,00	12,00	10,80	9,18	7,95	7,00	6,24	5,56	5,10		
	☹	-	-	-	-	-	-	-	-	-	-	-	-		
50,0	☺	12,0	36,4	12,00	12,00	12,00	12,00	10,88	9,66	8,60					
	☹	24,0	18,4	19,89	17,40	16,05	14,37	12,20	10,58	9,31	8,30				
40,0	☺	12,0	40,0	12,00	12,00	12,00	12,00	11,50							
	☹	24,0	19,5	21,12	18,50	17,08	15,30	13,02	11,30						
30,0	☺	12,0	30,0	12,00	12,00	12,00	12,00								
	☹	24,0	20,3	22,08	19,34	17,86	16,00								

Hoist 90,0 kW FI	
☺	t 4,8 6,2 8,8 10,6 11,2 12,0
☺	m/min 106 90 68 58 46 32
☹	t 9,6 12,4 17,6 21,2 22,4 24,0
☹	m/min 53 45 34 29 23 16
Drum capacity 1200,0 m	

Hoist 132,0 kW FI	
☺	t 5,2 6,0 7,8 10,6 12,0 12,0
☺	m/min 130 120 98 76 66 44
☹	t 10,4 12,0 15,6 21,2 24,0 24,0
☹	m/min 65 60 49 38 33 22
Drum capacity 1200,0 m	

Power requirement
400V (±10%) - 50Hz

Motor	45,0 kW FI	2 x 4,4 kW	4 x 7,5 kW
t/v	2,0 min	0,67 rpm	25,0 m/min
Power requirement		Hoist 90,0 kW	230,0 kVA
Upper part		Hoist 132,0 kW	270,0 kVA

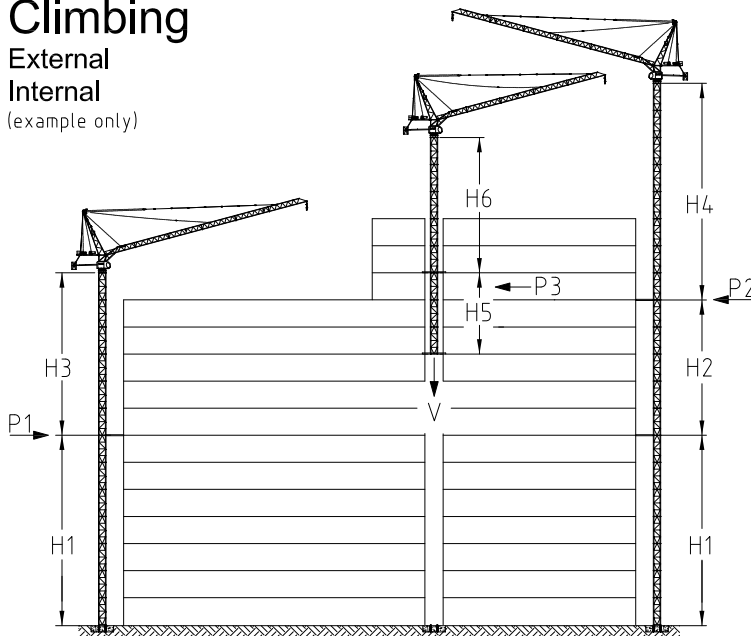
Shipping		
	Truck	Cont.
Top crane	9	10
Tower 2 unit	1	1
Climbing	2	2
Chasis	1	1

Counter weight	
Block 1	10 x 3,4 t
Block 2	-
Total	34,0 t

Ropes		
	D (mm)	N/mm ²
Hoist	20,0	1960
Luffing	20,0	1960

Climbing

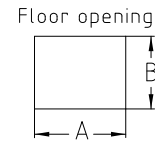
External
Internal
(example only)



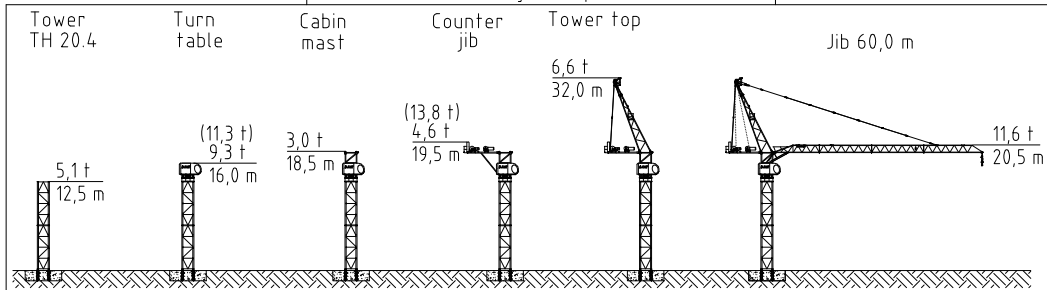
	m	in	out
		service	of service
		t	t
H1	48,0		
H2	30,0		
H3	36,0		
H4	36,0		
H5	16,0		
H6	24,0		
A	2,95		
B	2,45		
P1		212,6	366,5
P2		265,0	335,8
P3		429,8	432,0
V		1358,8	1058,1

All data with TH 20.4

Jib length 30,0 m



Assembly sequence



Crane on foundation plate

Jib length (m)	Tower height (m)	No. of Towers	Tower TH 20.4			Foundation loadings		Corner forces	
			M	V	H	F1	F2		
			(kNm)	(kN)	(kN)	(kN)	(kN)		
60,0	42,0	7,0	10342,0	1129,0	180,4	2016,0	- 2653,0		
50,0	42,0	7,0	9339,0	1120,0	170,2	2609,0	- 3312,0		
40,0	48,0	8,0	10378,0	1157,1	183,9	2615,0	- 3337,0		
30,0	54,0	9,0	10995,0	1157,1	191,4	2592,0	- 3314,0		

Crane on chassis

Jib length (m)	Tower height incl. chassis (m)	No. of Towers	Tower TH 20.4 / 8,0 m				Ballast (t)
			in service		out of service		
			Cp (kN)	H (kN)	Cp (kN)	H (kN)	
60,0	39,6	6,0	1130,0	71,3	1436,0	266,7	80,0
50,0	39,6	6,0	1435,0	78,9	1192,0	255,1	75,0
40,0	45,6	7,0	1441,0	78,4	1224,0	262,0	90,0
30,0	51,6	8,0	1429,0	76,8	1238,0	263,9	105,0

Part list

Part	L (m)	W (m)	H (m)	kg	Part	L (m)	W (m)	H (m)	kg	
Jib	01	9,68	1,88	2,19	2380	Counter jib	6,39	2,45	0,85	1420
Jib	02	10,35	1,88	1,95	1310	Hoist unit & rope	2,42	2,32	1,24	4165
Jib	03	10,35	1,88	1,95	1100	Luffing unit & rope	2,42	1,92	1,18	2270
Jib	04	10,35	1,88	1,95	1030	Turn table+slew.unit	2,50	2,30	2,00	8500
Jib	05	10,35	1,88	1,95	960	Tower top - BP&UP	11,80	1,90	2,29	5380
Jib	06	11,70	1,88	2,12	1560	Cabin mast	4,77	1,90	2,77	3010
Hook block		1,50	1,80	0,50	900	Cabin & controlhaus	4,00	1,31	2,20	1800