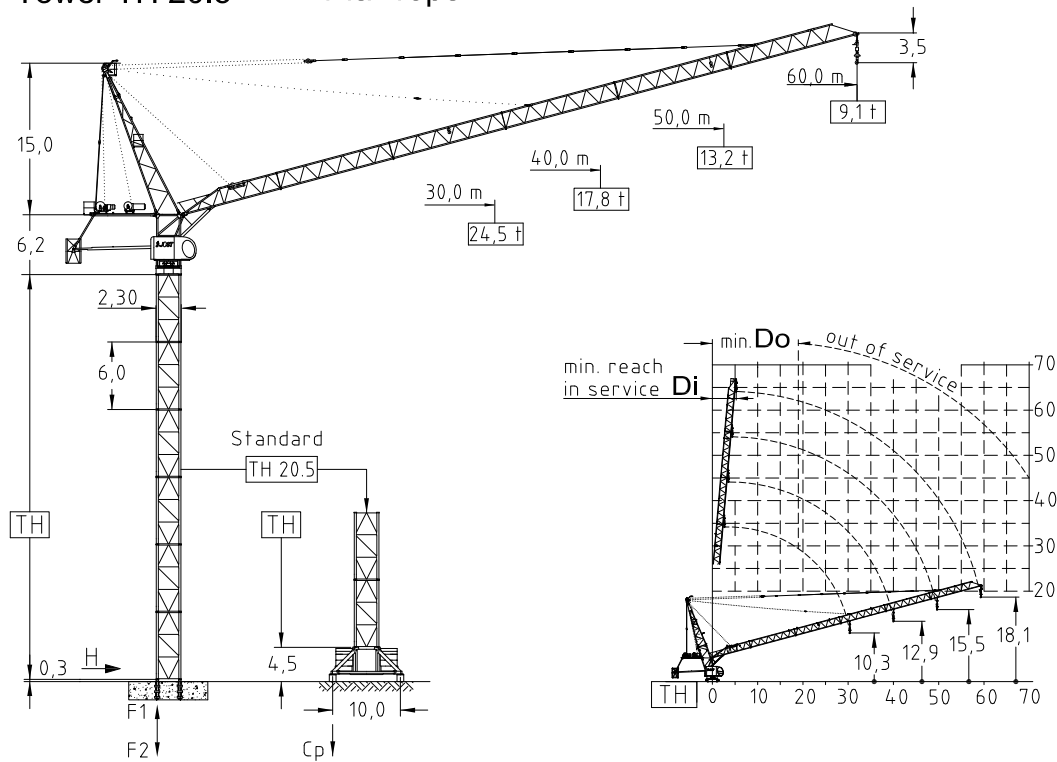


JL 616.32 - 32,0 ton Luffing crane

Tower TH 20.5 4-fall rope



Jib (m)	Jib reach (m)		Tower heights (m)	
			Standard	Tower
	Di	Do	Foundat. TH 20.5	Chassis UC 10,0-20.5
30,0	3,0	20,0	63,0	30,0
40,0	4,0	20,0	57,0	24,0
50,0	5,0	20,0	60,0	30,0
60,0	6,0	20,0	60,0	30,0

EN 14439 : 2008
WIND C 25
ISO 9001 : 2008



Jib		max. Load		Jib reach											
m	rope	t	m	22	25	27	30	35	40	45	50	55	60		
60,0		16,0	35,2	16,00	16,00	16,00	16,00	14,35	12,60	11,10	9,90	9,56	9,10		
		-	-	-	-	-	-	-	-	-	-	-	-		
50,0		16,0	41,6	16,00	16,00	16,00	16,00	16,00	16,00	14,75	13,20	-	-		
		-	-	-	-	-	-	-	-	-	-	-	-		
40,0		16,0	40,0	16,00	16,00	16,00	16,00	16,00	16,00	-	-	-	-		
		32,0	22,9	32,00	29,14	26,90	24,10	20,50	17,80	-	-	-	-		
30,0		16,0	30,0	16,00	16,00	16,00	16,00	-	-	-	-	-	-		
		32,0	23,2	32,00	29,63	27,35	24,50	-	-	-	-	-	-		

Hoist 132,0 kW FI		Jib reach					
l	t	7,0	8,0	10,2	13,6	16,0	16,0
		m/min	100	92	76	60	50
l	t	14,0	16,0	20,4	27,2	32,0	32,0
	m/min	50	46	38	30	25	17
Drum capacity		1300,0 m					

Hoist 160,0 kW FI		Jib reach					
l	t	5,6	6,8	9,2	12,2	14,6	16,0
		m/min	134	122	100	78	66
l	t	11,2	13,6	18,4	24,4	29,2	32,0
	m/min	67	61	50	39	33	22
Drum capacity		800,0 m					

Power requirement
400V (±10%) - 50Hz

Motor	75,0 kW FI	3 x 4,4 kW	4 x 10,0 kW
t/v	2,0 min	0,67 rpm	25,0 m/min
Power requirement		Hoist 132,0 kW	310,0 kVA
Upper part		Hoist 160,0 kW	350,0 kVA

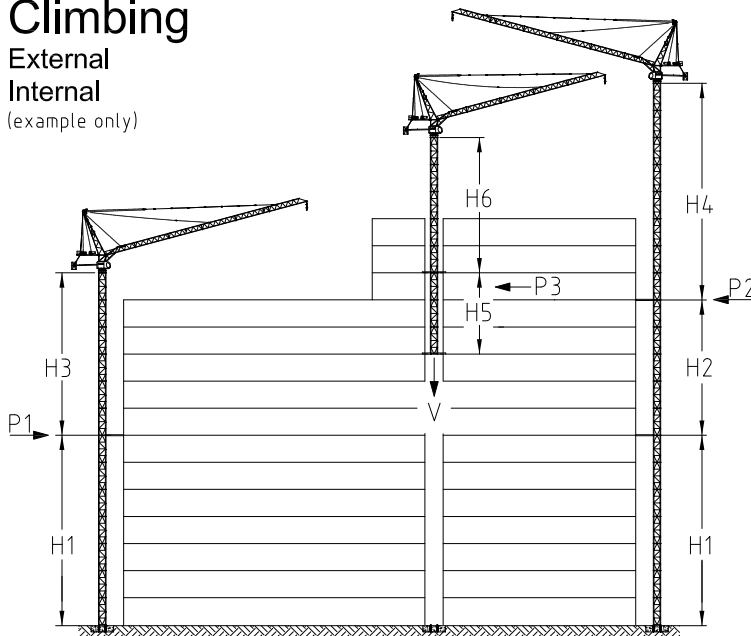
Shipping		
	Truck	Cont.
Top crane	9	10
Tower 2 unit	1	1
Climbing	2	2
Chasis	1	1

Counter weight	
Block 1	15 x 3,4 t
Block 2	-
Total	51,0 t

Ropes		
	D (mm)	N/mm ²
Hoist	22,0	1960
Luffing	22,0	1960

Climbing

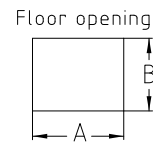
External
Internal
(example only)



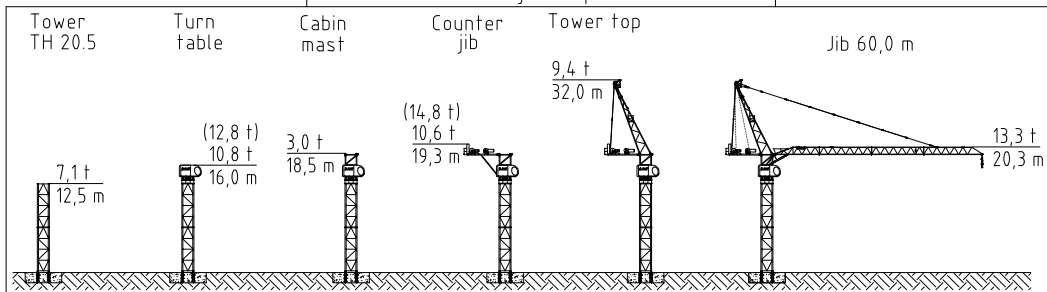
	m	in service	out of service
		t	t
H1	54,0		
H2	30,0		
H3	42,0		
H4	42,0		
H5	18,0		
H6	24,0		
A	3,05		
B	2,50		
P1		305,3	429,9
P2		406,1	497,0
P3		536,9	508,0
V		2136,5	1735,7

All data with TH 20.5

Jib length 30,0 m



Assembly sequence



Crane on foundation plate

Jib length (m)	Tower height (m)	No. of Towers	Tower TH 20.5			Foundation loadings		Corner forces	
			M	V	H	F1	F2		
			(kNm)	(kN)	(kN)	(kN)	(kN)		
60,0	60,0	10,0	19385,0	1887,9	257,5	3456,0	-4497,0		
50,0	60,0	10,0	18288,0	1873,2	246,6	3269,0	-4302,0		
40,0	57,0	9,5	15761,0	1787,6	228,3	3868,0	-4953,0		
30,0	63,0	10,5	15751,0	1772,4	226,8	3735,0	-4812,0		

Crane on chassis

Jib length (m)	Tower height incl. chassis (m)	No. of Towers	Tower TH 20.5 / 10,0 m				Ballast (t)
			in service		out of service		
			Cp (kN)	H (kN)	Cp (kN)	H (kN)	
60,0	52,5	8,0	1465,0	89,3	1681,0	342,4	70,0
50,0	52,5	8,0	1398,0	82,5	1415,0	330,4	65,0
40,0	55,5	8,5	1766,0	98,3	1347,0	327,7	65,0
30,0	58,5	9,0	1641,0	93,2	1240,0	319,4	65,0

Part list

Part	L (m)	W (m)	H (m)	kg	Part	L (m)	W (m)	H (m)	kg
Jib 01	9,81	1,88	2,38	3200	Counter jib	6,87	2,07	0,93	1390
Jib 02	10,36	1,88	2,02	1630	Hoist unit & rope	2,65	2,26	1,66	8200
Jib 03	10,36	1,88	2,02	1480	Luffing unit & rope	2,38	2,01	1,20	4250
Jib 04	10,36	1,88	2,02	1340	Turn table+slew.unit	3,01	2,30	2,26	10800
Jib 05	10,36	1,88	2,02	1200	Tower top - BP&UP	11,88	2,12	2,32	8650
Jib 06	11,73	1,88	2,19	2130	Cabin mast	4,82	1,92	3,03	4300
Hook block	1,40	1,86	0,60	1205	Cabin & controlhaus	4,00	1,31	2,20	1800