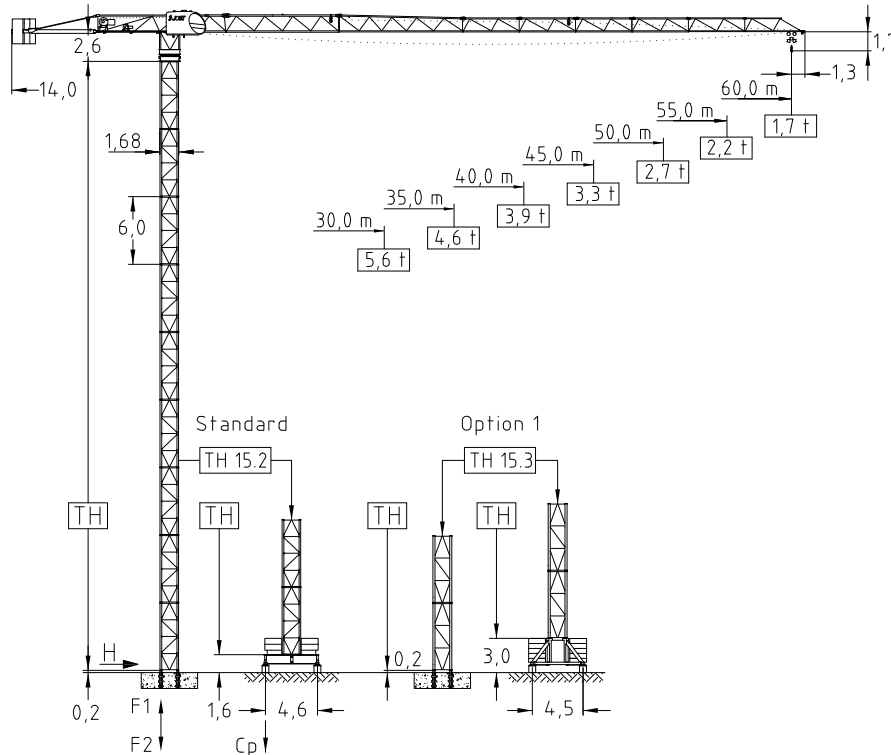


# JT 152.8 - 8,0 ton Topless Crane

Tower TH 15.2 4-fall rope



Jib (m)	Tower heights all data in (m)			
	Standard Tower		Option 1	
	Foundat.	Chassis	Foundat.	Chassis
30,0-35,0-34,0	TH 15.2	FC 4,6-15.2	TH 15.3	UC 4,5-15.3
45,0-50,0-55,0-60,0	54,0	45,0	62,0	51,0

EN 14439 : 2008  
WIND C 25  
ISO 9001 : 2008



Jib		max. Load	Jib reach									
m	rope	t	20	25	28	30	35	40	45	50	55	60
60,0	4,0	29,6	4,00	4,00	4,00	3,93	3,29	2,81	2,44	2,14	1,90	1,70
	8,0	16,2	6,27	4,84	4,23	3,90	3,23	2,74	2,36	2,05	1,81	1,60
55,0	4,0	33,1	4,00	4,00	4,00	4,00	3,75	3,21	2,80	2,47	2,20	
	8,0	17,8	7,00	5,43	4,76	4,39	3,66	3,12	2,70	2,37	2,10	
50,0	4,0	35,7	4,00	4,00	4,00	4,00	4,00	3,50	3,06	2,70		
	8,0	19,1	7,59	5,89	5,17	4,78	3,99	3,41	2,96	2,60		
45,0	4,0	38,1	4,00	4,00	4,00	4,00	4,00	3,78	3,30			
	8,0	20,4	8,00	6,33	5,57	5,14	4,31	3,68	3,20			
40,0	4,0	39,2	4,00	4,00	4,00	4,00	4,00	3,90				
	8,0	20,9	8,00	6,53	5,74	5,30	4,44	3,80				
35,0	4,0	35,0	4,00	4,00	4,00	4,00	4,00					
	8,0	21,5	8,00	6,75	5,94	5,49	4,60					
30,0	4,0	30,0	4,00	4,00	4,00	4,00						
	8,0	21,9	8,00	6,88	6,06	5,60						

Hoist 22,0 kW FI							
l	t	1,2	1,8	2,8	4,0	4,0	4,0
	m/min	62	52	42	32	26	16
l	t	2,4	3,6	5,6	8,0	8,0	8,0
	m/min	31	26	21	16	13	8
Drum capacity					320,0 m		

Hoist 30,0 kW FI							
l	t	1,0	1,4	2,2	3,5	4,0	4,0
	m/min	90	82	66	50	42	24
l	t	2,0	2,8	4,4	7,0	8,0	8,0
	m/min	45	41	33	25	21	12
Drum capacity					700,0 m		

Power requirement  
400V (±10%) - 50Hz

Motor	3,0 kW FI	2 x 5,0 kW	2 x 5,0 kW
t/v	0,0-80,0 m/min	0,77 rpm	25,0 m/min
Power requirement		Hoist 22,0 kW	48,0 kVA
Upper part		Hoist 30,0 kW	60,0 kVA

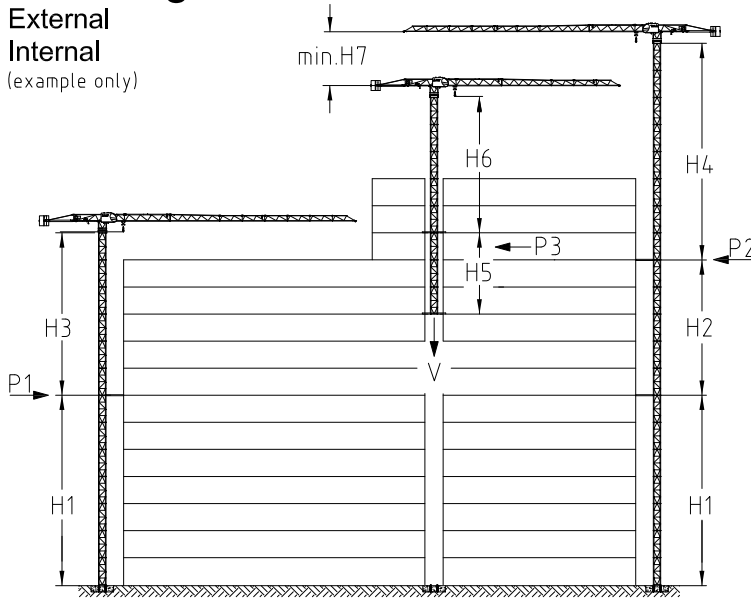
Shipping		
	Truck	Cont.
Top crane	5	6
Tower	2 unit	1
Climbing	1	1
Chassis	1	1

Counter weight	
Block 1	6 x 2,8 t
Block 2	-
Total	16,8 t

Ropes		
	D (mm)	N/mm <sup>2</sup>
Hoist	12,0	1960
Trolley	8,0	1770

# Climbing

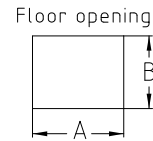
External  
Internal  
(example only)



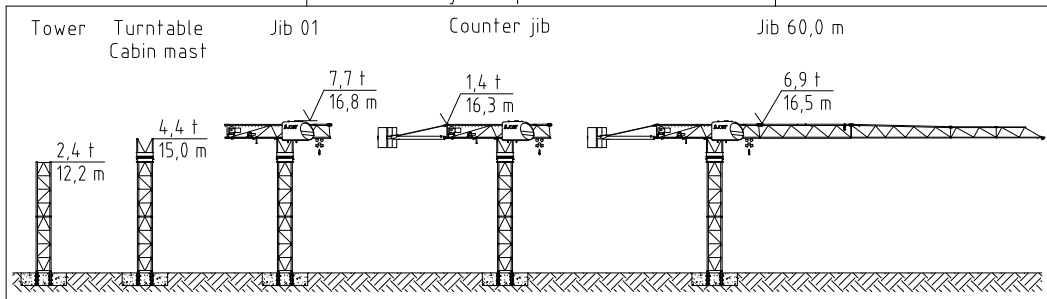
	m	in service	out of service
		†	†
H1	48,0		
H2	36,0		
H3	42,0		
H4	36,0		
H5	14,0		
H6	27,0		
H7	6,0		
A	2,30		
B	1,80		
P1		93,7	224,3
P2		91,7	189,6
P3		161,4	148,0
V		578,8	478,4

All data with TH 15.2

Jib length 30,0 m



## Assembly sequence TH 15.2



## Crane on foundation plate

Jib length (m)	Tower height (m)	No. of Towers	Foundation loadings			Corner forces	
			M (kNm)	V (kN)	H (kN)	F1 (kN)	F2 (kN)
60-55-50-45	51,0	8,5	4492,0	594,3	121,5	1623,0	- 1921,0
40-35-30	54,0	9,0	4867,0	565,4	122,7	1604,0	- 1897,0

## Crane on chassis

Jib length (m)	Tower height incl. chassis (m)	No. of Towers	in service		out of service		Ballast (t)
			Cp (kN)	H (kN)	Cp (kN)	H (kN)	
60-55-50-45-40	45,0	7,5	748,0	32,1	894,0	122,6	95,0
35-30	48,0	8,0	855,0	32,1	924,0	129,3	105,0

## Part list

Part	L (m)	W (m)	H (m)	kg	Part	L (m)	W (m)	H (m)	kg
Jib 01	11,82	2,45	2,24	4100	Counter jib 01	7,65	1,99	1,55	1400
Jib 11	5,35	1,10	1,65	1665	Hook block	0,82	0,42	0,96	342
Jib 02	10,30	1,10	1,64	1600	Hoist unit & rope	1,66	1,54	0,88	1300
Jib 03	11,25	1,10	1,58	1310	Trolley unit & rope	1,10	0,87	0,56	280
Jib 04	5,22	1,10	1,31	545	Trolley	1,40	1,40	0,93	250
Jib 05	5,18	1,10	1,30	450	Turn table+slew.unit	2,27	1,90	2,57	4350
Jib 06	5,17	1,10	1,30	360	Cabin & controlhouse	3,50	2,20	1,10	1350
Jib 07	5,15	1,10	1,30	290	Jib end	0,53	1,22	0,95	70
Jib 08	5,13	1,10	1,27	250					
Jib 09	5,12	1,10	1,27	200					