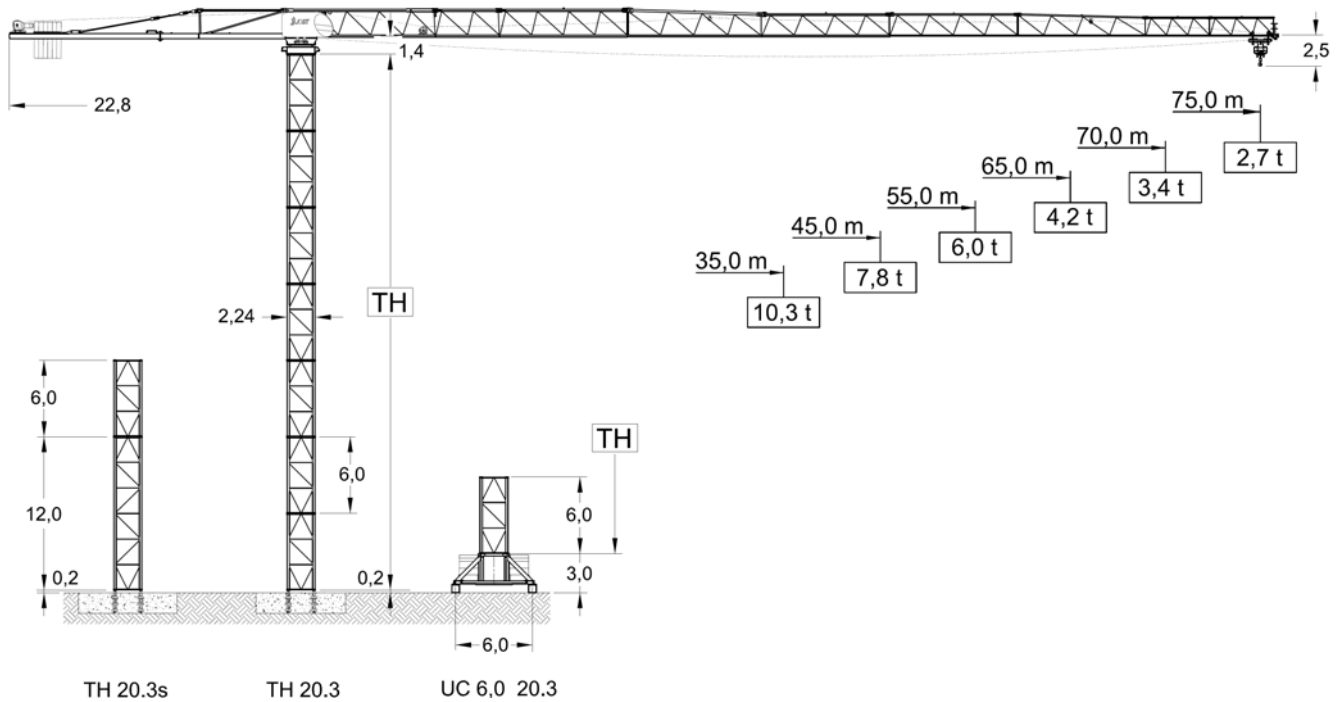


# JT 352.12

Topless crane  
Tower TH 20.3



		Foundation	Chassis
<b>Jib length (m)</b>		<b>35,0 - 75,0</b>	<b>35,0 - 75,0</b>
<b>TH</b>	TH 20.3	54,0 m	42,0 m
	TH 20.3s	60,0 m	--

Radius & Capacity													
Jib		max Load											
m	rope	t	m	30	35	40	45	50	55	60	65	70	75
75		6,0	38,7	6,00	6,00	5,76	5,03	4,44	3,96	3,57	3,23	2,95	2,70
		12,0	20,6	7,74	6,45	5,49	4,75	4,16	3,67	3,27	2,94	2,65	2,40
70		6,0	43,1	6,00	6,00	6,00	5,71	5,06	4,53	4,09	3,72	3,40	
		12,0	22,6	8,67	7,26	6,21	5,40	4,75	4,22	3,78	3,42	3,10	
65		6,0	47,6	6,00	6,00	6,00	6,00	5,67	5,09	4,61	4,20		
		12,0	25,2	9,84	8,27	7,10	6,20	5,48	4,90	4,41	4,00		
55		6,0	55,0	6,00	6,00	6,00	6,00	6,00	6,00	6,00			
		12,0	28,8	11,42	9,64	8,31	7,28	6,47	5,80				
45		6,0	45,0	6,00	6,00	6,00	6,00						
		12,0	29,3	12,00	10,31	8,89	7,80						
35		6,0	35,0	6,00	6,00								
		12,0	30,5	12,00	10,30								

Speeds 400 V - 50 Hz / 440 V - 60 Hz							
Hoist unit 45 kW		Frequency inverter					
Pmax		6,0 - 12,0 ( to )					
	Load [to]	2,7	3,0	3,4	4,2	5,2	6,0
	v [m/min]	72	68	62	52	42	38
	Load [to]	5,4	6,0	6,8	8,4	10,4	12,0
	v [m/min]	36	34	31	26	21	19
<b>Drum capacity</b>		<b>520,0 m</b>					

Hoist unit 55 / 64 kW							
Frequency inverter							
Pmax		6,0 - 12,0 ( to )					
	Load [to]	2,7	3,0	3,4	4,2	5,2	6,0
	v [m/min]	94	88	80	68	56	50
	Load [to]	5,4	6,0	6,8	8,4	10,4	12,0
	v [m/min]	47	44	40	34	28	25
<b>Drum capacity</b>		<b>600,0 m</b>					

\* Further hoist models available on request.

<b>Motor</b>	5,5 kW FI	3 x 4,4 kW	4 x 5,0 kW
<b>t / v</b>	0,0 - 80,0 m/min	0,67 rpm	25,0 m / min
<b>Power requirement Upper part</b>		Hoist 45 kW	78 kVA
		Hoist 55 / 64 kW	102 kVA



Edition 02/07. Subject to modification.  
Specifications and data not binding.

**JOST Cranes GmbH & Co. KG**  
Wernher-von-Braun-Str. 10  
85640 Putzbrunn  
GERMANY

**FON** +49 (89) 454525-18  
**FAX** +49 (89) 454525-63  
**MAIL** [info@jostcranes.de](mailto:info@jostcranes.de)  
**WEB** [www.jostcranes.de](http://www.jostcranes.de)