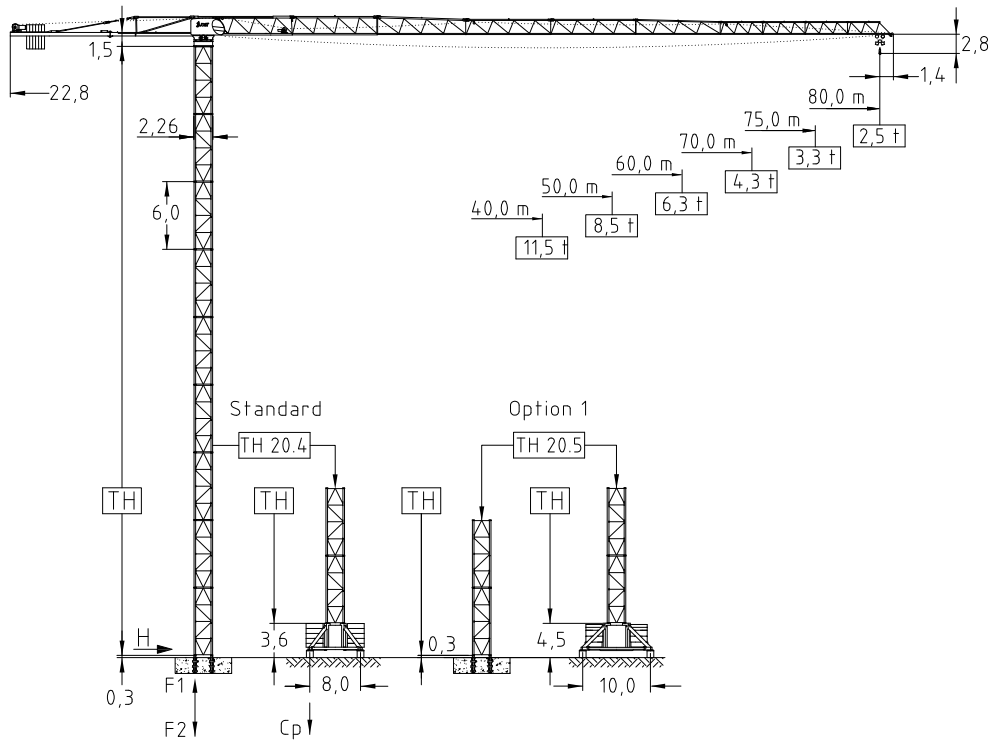


JT 412.24 - 24,0 ton

Tower TH 20.4 4-fall rope

Topless Crane



Jib (m)	Tower heights all data in (m)			
	Standard Tower		Option 1	
	Foundat.	Chassis	Foundat.	Chassis
	TH 20.4	UC 8,0-20.4	TH 20.5	UC 10,0-20.5
40,0 - 50,0	63,0	57,0	75,0	69,0
60,0 - 65,0 - 70,0	60,0	54,0	72,0	66,0
75,0 - 80,0	60,0	54,0	72,0	63,0

EN 14439 : 2008
WIND C 25
ISO 9001 : 2008



Jib		max. Load	Jib reach										
m	rope		t	20	25	30	35	40	50	60	70	75	80
80,0	☺	12,0	23,3	12,0	11,03	8,91	7,41	6,30	4,77	3,76	3,04	2,75	2,50
	☹	24,0	12,6	13,25	10,60	8,46	6,95	5,84	4,29	3,27	2,54	2,25	2,00
75,0	☺	12,0	26,0	12,00	12,00	10,16	8,50	7,26	5,55	4,42	3,62	3,30	
	☹	24,0	14,0	15,24	12,19	9,81	8,13	6,89	5,16	4,03	3,22	2,90	
70,0	☺	12,0	29,4	12,00	12,00	11,72	9,83	8,43	6,49	5,21	4,30		
	☹	24,0	15,6	17,45	13,96	11,29	9,41	8,01	6,08	4,80	3,90		
60,0	☺	12,0	34,3	12,00	12,00	11,73	10,08	7,80	6,30				
	☹	24,0	18,2	16,66	13,53	11,31	9,67	7,40	5,90				
50,0	☺	12,0	36,9	12,00	12,00	12,00	10,96	8,50					
	☹	24,0	19,5	18,10	14,71	12,32	10,55	8,10					
40,0	☺	12,0	38,5	12,00	12,00	12,00	11,50						
	☹	24,0	20,1	18,83	15,36	12,00	11,10						

Hoist 90,0 kW FI		t	4,8	6,2	8,8	10,6	11,2	12,0
ℓ	m/min	106	90	68	58	46	32	
ℓ	t	9,6	12,4	17,6	21,2	22,4	24,0	
ℓ	m/min	53	45	34	29	23	16	
Drum capacity		1200,0 m						

Hoist 132,0 kW FI		t	5,2	6,0	7,8	10,6	12,0	12,0
ℓ	m/min	130	120	98	76	66	4,4	
ℓ	t	10,4	12,0	15,6	21,2	24,0	24,0	
ℓ	m/min	65	60	49	38	33	22	
Drum capacity		1200,0 m						

Power requirement
400V (±10%) - 50Hz

	☺	☹	☺
Motor	7,5 kW FI	4 x 4,4 kW	4 x 7,5 kW
t/v	0,0-100,0 m/min	0,67 rpm	25,0 m/min
Power requirement		Hoist 90,0 kW	180,0 kVA
Upper part		Hoist 132,0 kW	250,0 kVA

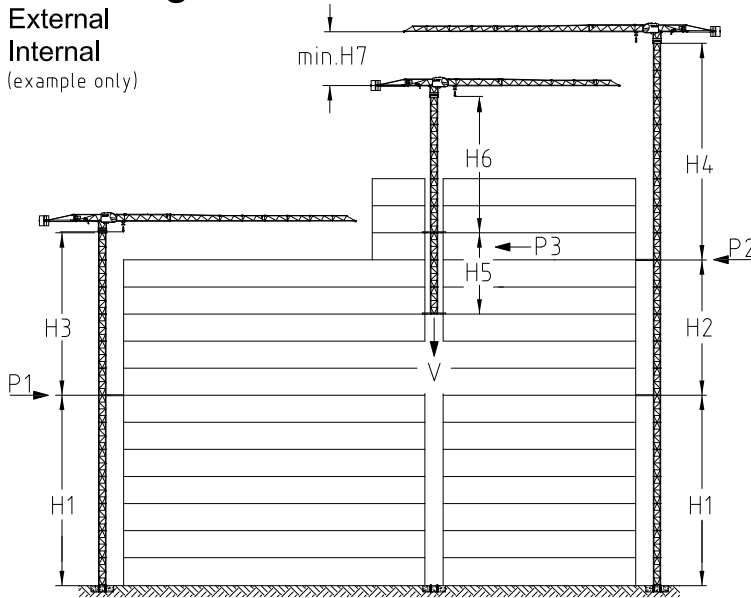
Shipping		
	Truck	Cont.
Top crane	7	8
Tower 2 unit	1	1
Climbing	2	2
Chasis	1	1

Counter weight	
Block 1	6 x 3,9 t
Block 2	2 x 2,5 t
Total	28,4 t

Ropes		
	D (mm)	N/mm ²
Hoist	20,0	1960
Trolley	14,0	1770

Climbing

External
Internal
(example only)

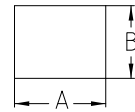


	m	in service	out of service
		†	†
H1	54,0		
H2	36,0		
H3	42,0		
H4	42,0		
H5	16,0		
H6	30,0		
H7	8,0		
A	2,95		
B	2,45		
P1		179,0	408,0
P2		204,0	352,7
P3		345,5	362,4
V		1474,3	1176,1

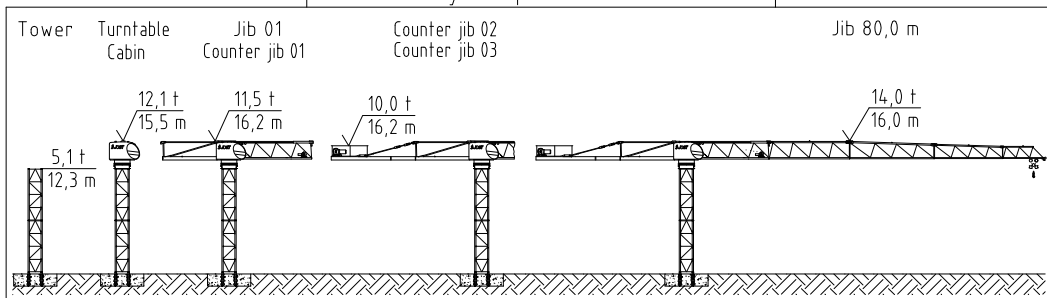
All data with TH 20.4

Jib length 40,0 m

Floor opening



Assembly sequence TH 20.4



Crane on foundation plate

Jib length (m)	Tower height (m)	No. of Towers	Tower TH 20.4			Corner forces	
			Foundation loadings			F1	F2
			M (kNm)	V (kN)	H (kN)	(kN)	(kN)
80-75-70	60,0	10,0	10990,0	1392,0	245,5	3020,0	- 3716,0
60-50-40	63,0	10,5	11815,0	1315,6	243,8	2792,0	- 3450,0

Crane on chassis

Jib length (m)	Tower height incl. chassis (m)	No. of Towers	in service		out of service		Ballast (t)
			Cp	H	Cp	H	
			(kN)	(kN)	(kN)	(kN)	
80-75-70	57,6	9,0	1184,0	74,5	1514,0	282,8	90,0
60-50-40	60,6	9,5	1360,0	74,0	1475,0	291,9	125,0