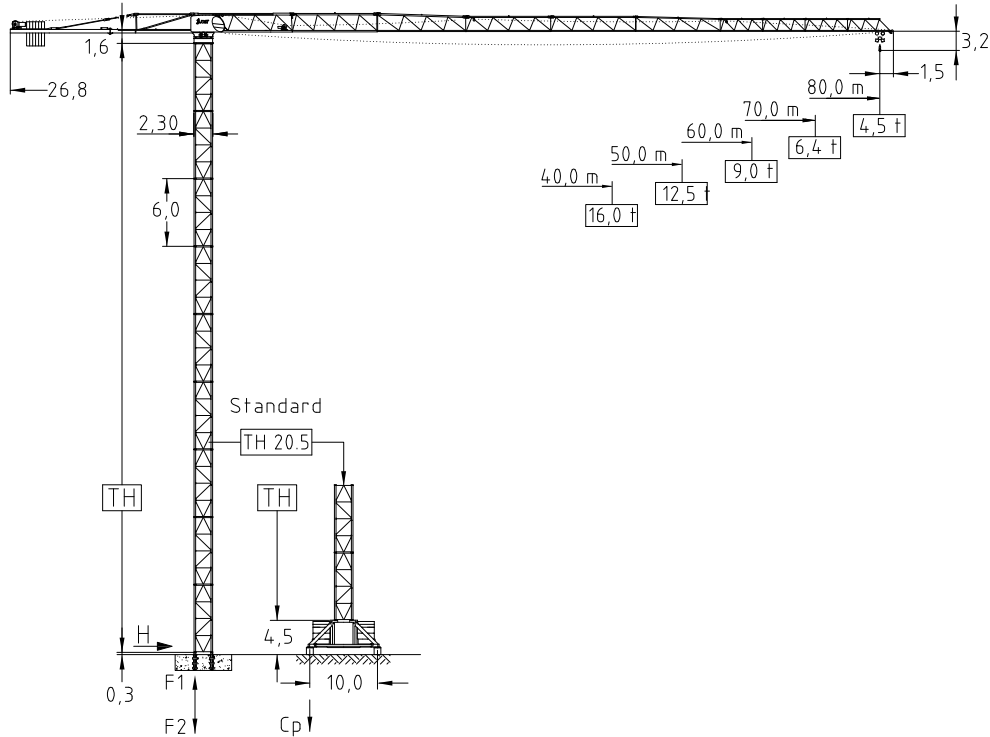


JT 612.32- 32,0 ton

Tower TH 20.5 4-fall rope

Topless Crane



Jib (m)	Tower heights	
	Standard Tower	
	Foundat.	Chassis
40,0 - 50,0	TH 20.5	UC 10,0-20.5
60,0 - 70,0	72,0	66,0
80,0	72,0	63,0

EN 14439 : 2008
WIND C 25
ISO 9001 : 2008



Jib		max. Load	Jib reach										
m	rope	t	20	25	30	40	50	60	65	70	75	80	
80,0		16,0	27,9	16,00	16,00	14,71	10,56	8,11	6,50	5,88	5,35	4,90	4,50
		32,0	14,9	22,73	7,53	11,14	9,98	7,53	5,91	5,29	4,76	4,30	3,90
70,0		16,0	31,7	16,00	16,00	16,00	12,30	9,53	7,70	7,00	6,40		
		32,0	17,0	16,48	20,56	16,69	11,95	9,16	7,31	6,60	6,00		
60,0		16,0	36,2	16,00	16,00	16,00	14,27	11,10	9,00				
		32,0	19,0	30,20	23,50	19,13	13,76	10,59	8,50				
50,0		16,0	40,1	16,00	16,00	16,00	12,50						
		32,0	21,1	32,00	26,39	21,51	15,53	12,00					
40,0		16,0	40,0	16,00	16,00	16,00	16,00						
		32,0	22,0	32,00	27,64	22,55	16,30						

Hoist 132,0 kW FI		t	7,0	8,0	10,2	13,6	16,0	16,0
	m/min	100	92	76	60	50	34	
	t	14,0	16,0	20,4	27,2	32,0	32,0	
	m/min	50	46	38	30	25	17	
	Drum capacity	1300,0 m						

Hoist 160,0 kW FI		t	5,6	6,8	9,2	12,2	14,6	16,0
	m/min	134	122	100	78	66	44	
	t	11,2	13,6	18,4	24,4	29,2	32,0	
	m/min	67	61	50	39	33	22	
	Drum capacity	800,0 m						

Power requirement
400V (±10%) - 50Hz

Motor	9,0 kW FI	4 x 4,4 kW	4 x 10,0 kW
t/v	0,0-100,0 m/min	0,67 rpm	25,0 m/min
Power requirement		Hoist 132,0 kW	310,0 kVA
Upper part		Hoist 160,0 kW	350,0 kVA

Shipping		
	Truck	Cont.
Top crane	7	8
Tower 2 unit	1	1
Climbing	2	2
Chasis	2	2

Counter weight	
Block 1	6 x 3,9 t
Block 2	2 x 2,5 t
Total	28,4 t

Ropes		
	D (mm)	N/mm ²
Hoist	22,0	1960
Trolley	14,0	1770

