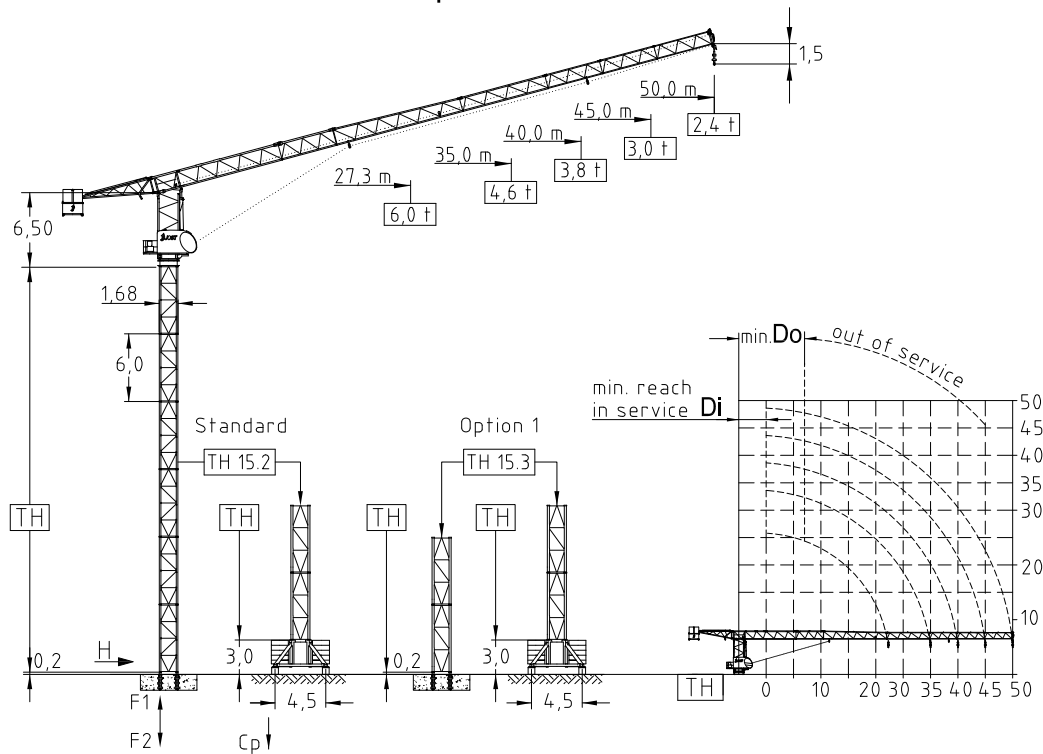


JTL 158.6 - 6,0 ton

Tower TH 15.2 4-fall rope

Topless Luffing crane



Jib (m)	Jib reach (m)		Tower heights all data in (m)			
			Standard Tower		Option 1	
			Foundat.	Chassis	Foundat.	Chassis
	Di	Do	TH 15.2	UC 4,5-15.2	TH 15.3	UC 4,5-15.3
27,3	4,3	12,0	39,0	39,0	51,0	39,0
35,0	4,3	12,0	36,0	33,0	48,0	33,0
40,0	4,3	12,0	33,0	30,0	45,0	30,0
45,0	4,3	10,0	30,0	27,0	42,0	27,0
50,0	4,3	10,0	27,0	24,0	39,0	24,0

EN 14439 : 2008
WIND C 25
ISO 9001 : 2008



Jib		max. Load		Jib reach											
m	rope	t	m	22	25	27,3	30	35	40	45	50				
50,0	⊗	3,0	40,9	3,00	3,00	3,00	3,00	3,00	3,00	2,70	2,40				
	⊙	6,0	21,5	5,68	5,12	6,00	4,21	5,12	3,08	2,70	2,40				
45,0	⊗	3,0	45,0	3,00	3,00	3,00	3,00	3,00	3,00	3,00					
	⊙	6,0	23,7	6,00	5,66	6,00	4,66	3,95	3,42	3,00					
40,0	⊗	3,0	40,0	3,00	3,00	3,00	3,00	3,00	3,00						
	⊙	6,0	26,1	6,00	6,00	6,00	5,17	4,39	3,80						
35,0	⊗	3,0	30,0	3,00	3,00	3,00	3,00								
	⊙	6,0	27,3	6,00	6,00	6,00	5,43	4,60							
27,3	⊗	3,0	27,3	3,00	3,00	3,00									
	⊙	6,0	27,3	6,00	6,00	6,00									

Hoist 22,0 kW FI							
l	t	0,7	1,2	1,8	2,8	3,0	3,0
		m/min	88	72	58	44	38
l	t	1,4	2,4	3,6	5,6	6,0	6,0
	m/min	44	36	29	22	19	11
Drum capacity						550,0 m	

Hoist 30,0 kW FI							
l	t	0,7	1,0	1,6	2,4	3,0	3,0
		m/min	124	114	90	68	58
l	t	1,4	2,0	3,2	4,8	6,0	6,0
	m/min	62	57	45	24	29	16
Drum capacity						970,0 m	

Power requirement
400V (±10%) - 50Hz

Motor	15,0 kW FI	1 x 4,4 kW	2 x 5,0 kW
t/v	2,00 min	0,77 rpm	25,0 m/min
Power requirement		Hoist 22,0 kW	55 kVA
Upper part		Hoist 30,0 kW	65 kVA

Shipping		
	Truck	Cont.
Top crane	5	6
Tower 2 unit	1	1
Climbing	1	1
Chasis	1	1

Counter weight	
Block 1	2 x 5,5 t
Block 2	1 x 7,2 t
Block 3	2 x 1,7 t
Total	21,6 t

Ropes		
	D (mm)	N/mm ²
Hoist	10,0	1960

