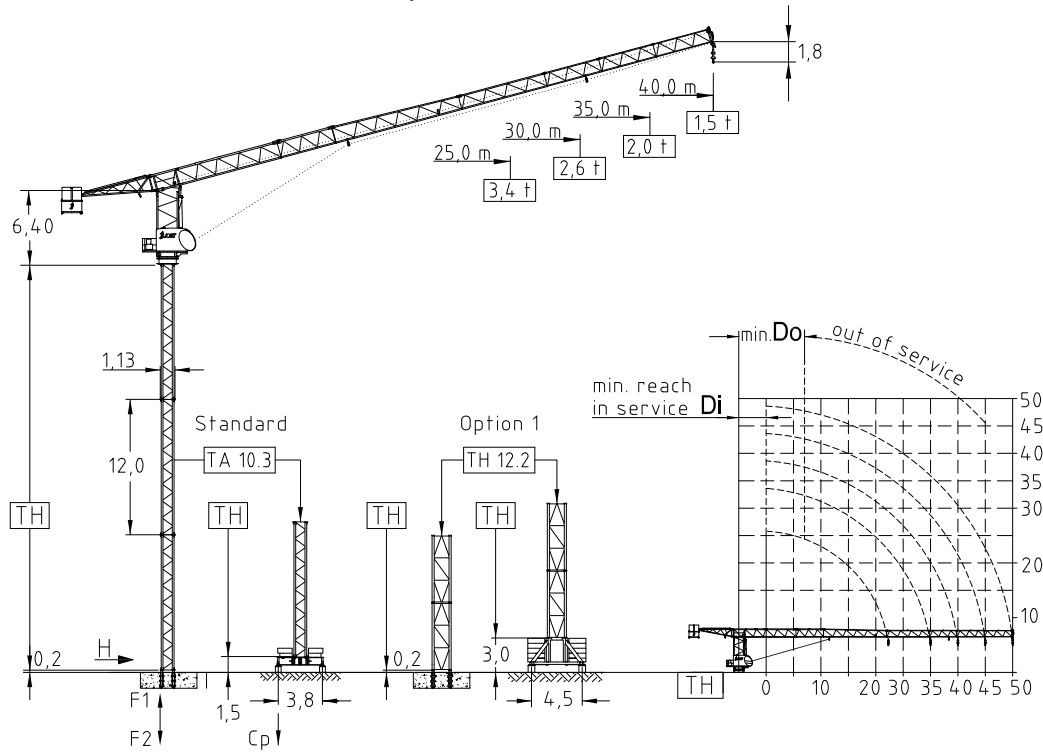


# JTL 68.4 - 4,0 ton

Tower TA 10.3 2-fall rope

# Topless Luffing crane



Jib (m)	Jib reach (m)		Tower heights all data in (m)			
			Standard Tower		Option 1	
			Foundat.	Chassis	Foundat.	Chassis
	Di	Do	TH 10.3	FC 3,8-10.3	TH 12.2	UC 4,5-12.2
25,0	3,5	10,0	33,0	30,0	36,0	33,0
30,0	3,5	10,0	30,0	27,0	33,0	30,0
35,0	3,5	9,0	27,0	24,0	33,0	27,0
40,0	3,5	9,0	27,0	21,0	30,0	27,0

EN 14439 : 2008  
WIND C 25  
ISO 9001 : 2008



Radius & Capacity											
Jib		max. Load	Jib reach								
m	rope		t	m	15	18	20	22	25	30	35
40,0	⊗	4,0	15,9	4,00	3,52	3,15	2,85	2,49	2,05	1,74	1,50
35,0	⊗	4,0	18,2	4,00	4,00	3,62	3,28	2,86	2,36	2,00	
30,0	⊗	4,0	19,9	4,00	4,00	3,98	3,60	3,15	2,60		
25,0	⊗	4,0	21,4	4,00	4,00	4,00	3,89	3,40			

Hoist 22,0 kW FI							
⊗	t	1,2	1,8	2,8	4,0	4,0	4,0
	m/min	15	26	31	41	51	62
Drum capacity		280,0 m					

Hoist 30,0 kW FI							
⊗	t	0,7	1,0	1,6	2,4	3,0	3,0
	m/min	124	114	90	68	58	32
Drum capacity		580,0 m					

Power requirement  
400V (±10%) - 50Hz

Motor	7,5 kW FI	1 x 2,0 kW	2 x 3,0 kW
t/v	2,0 min	0,77 rpm	25,0 m/min
Power requirement		Hoist 22,0 kW	45 kVA
Upper part		Hoist 30,0 kW	55 kVA

Shipping		
	Truck	Cont.
Top crane	4	5
Tower 2 unit	1	1
Climbing	1	1
Chasis	1	1

Counter weight	
Block 1	3 x 4,0 t
Block 2	1 x 1,0 t
Total	13,0 t

Ropes		
	D (mm)	N/mm <sup>2</sup>
Hoist	12,0	1960

